

KONNECT

COUNTER SYSTEM



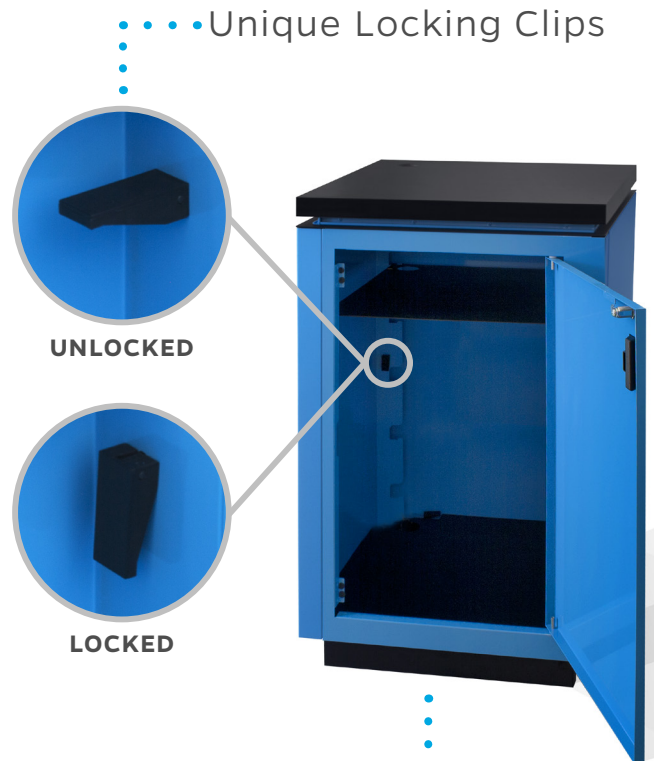
Tool-free
Sets up in **2 minutes**
Holds up to **400 lbs**

AVAILABLE THROUGH

Colorwave Graphics, LLC
Your complete display & imaging resource

SETS UP IN 2 MINUTES

Fabricated from sheet aluminum, the light-weight, knock-down **Konnect Counter System** sets up fast and easy and holds up to 400 lbs! Simply lock each of the four sides into the base using the clips, insert shelving and secure counter top in place.



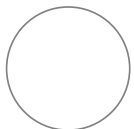
••• **Single** (23" x 23" x 39.5"h)
Double (23" x 46" x 39.5"h)

FULL CUSTOMIZATION

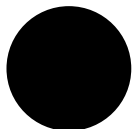
Choose from any of our standard finishes or customize your counter with virtually any color.

Accessorize with charging ports, tablet holders, accent lights and more!

STANDARD PAINT FINISHES



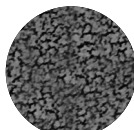
WHITE



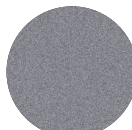
BLACK



STANDARD SILVER



SILVER VEIN

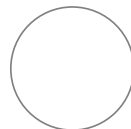


SILVER TEX

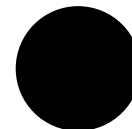


BLACK TEX

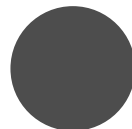
STANDARD COUNTERTOP FINISHES



WHITE



BLACK



GRAY